

2011 Artist in Residence Schedule and Presentation Dates



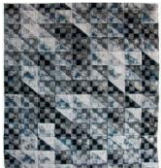
Martine MacDonald (April 28-May14) is an adjunct professor of art at Wayne County Community College with a studio practice in Allen Park, Michigan. During her residency she plans to continue her exploration of Michigan's skiescapes through oil painting. **Presentation 7:30 pm, Thursday, May 5**



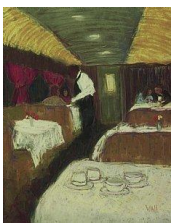
Taimur Cleary (May 15-28), recently received his MFA from the Pratt Institute in NYC with a concentration in painting. Despite study and travels throughout the world, his affinity for northern Michigan remains strong. He will use his residency to concentrate on the sights of early spring. **Presentation 7:30 PM, Thursday, May 26**



Michael Letts (May 29-June 11) is a landscape painter from Marquette where he teaches at Northern Michigan University. His highly detailed paintings often take months to complete and reflect his love of being outdoors. During his stay he will bike and hike the area doing preparatory work that will be the basis for larger paintings to be later completed in his studio. **Presentation 7:30 PM, Thursday, June 9**



Rachel Meginnes (June 12- 25) will travel from San Francisco where she specializes in creating Works on Cloth and is a designer of one-of-a kind handmade carpets. Having lived in large cities for many years, she looks forward to the opportunity to re-connect with the rural landscape and intends to use her time finding inspiration for a proposed series of mixed media works. **Presentation 7:30 PM, Thursday, June 23**



Liz Wall (June 26-July 2) is a Chicago-based artist who teaches at Morain Valley Community College and leads pastel and oil painting classes for community arts organizations. She intends to study the Sleeping Bear Dunes landscape and looks forward to uninterrupted time to explore our unique landscape. **No presentation**



Cathy VanVoorhis (July 31-August 6) is an oil painter from Dexter, Michigan. She teaches part-time at Washtenaw Community College and the University of Michigan. Her goal is to complete a series of oil paintings around Glen Arbor and the Port Oneida area. **No presentation**



Katherine Sullivan (August 21-27) will spend her residency week continuing to work on her exploration of the changing elements of light and wind on the water for a series entitled *Surface*. She lives in Holland where she is Associate Professor of Art at Hope College. **No presentation**



Connie Kuhnle (September 4-17) is a plein air artist, studio painter, portrait artist, and art instructor from Rockford. She looks forward to having a concentrated time to focus on plein air oil paintings to describe both the beauty of the landscape and historic architecture. **Presentation 7:30 PM, Wednesday, September 14**



Ellie Harold (September 18-October 1) paints exclusively in oil, outdoors and in the studio. Largely self-taught, she feels that her previous careers as a nurse, minister and author bring depth and spiritual dimensions to her work. **Presentation 7:30 PM, Thursday, September 29**



Lynn Uhlmann (October 2-15) has a long affinity for the Glen Lake area. She will travel from Shippensburg, PA to paint a series of plein air paintings. Using Thoreson Farm as her base, she looks forward to capturing some of her favorite summer spots in the last weeks of fall. **Presentation 7:30 PM, Thursday, October 13**



Diane Clise (October 16-23) is a landscape watercolor artist from Alma, Michigan. She will use her residency to explore her new interest in encaustic painting, a by-product of her husband's hobby of beekeeping, and experiment with using the wax to expand the breadth of her landscape paintings. **No presentation**